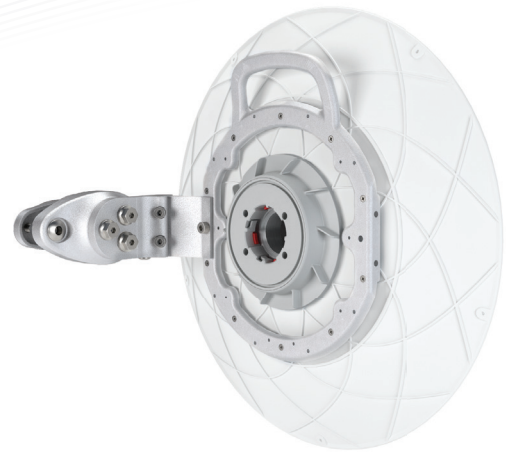


# UltraDish™ TP 380

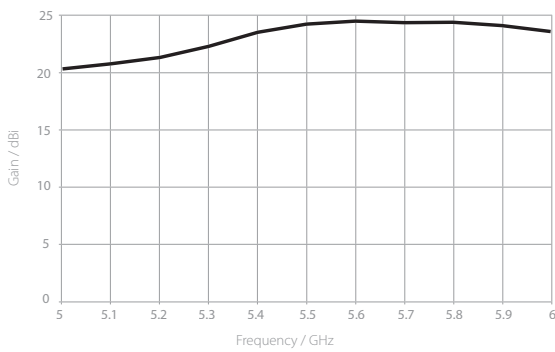
## DIRECTIONAL PARABOLIC DISH ANTENNA WITH TWISTPORT™ CONNECTOR

UltraDish™ TP 380's are designed for CPE or PtP connections. The antenna reflector is made of die-cast aluminum to ensure a very uniform shape. Our virtually lossless TwistPort™ connector guarantees easy radio deployment and maintenance.

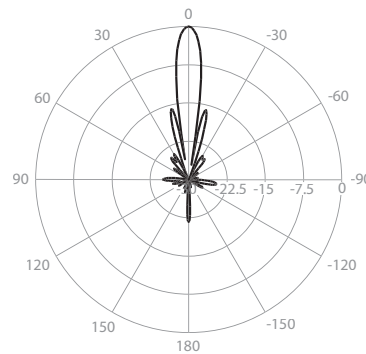
Antenna installation is extremely easy and ensures rapid deployment for large scale projects. Our innovative antenna mount fits a wide range of pole diameters and can be easily swapped for right or left side mounts. A single HEX tool is all you need to perform your installation.



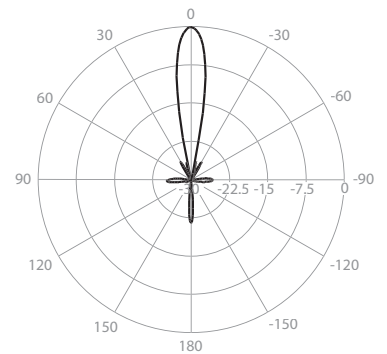
Gain H



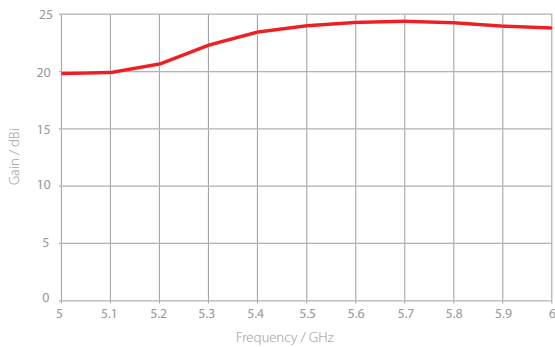
Azimuth Pattern H



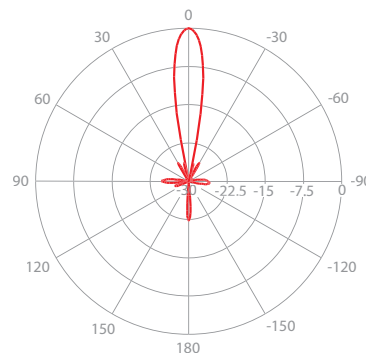
Elevation Pattern H



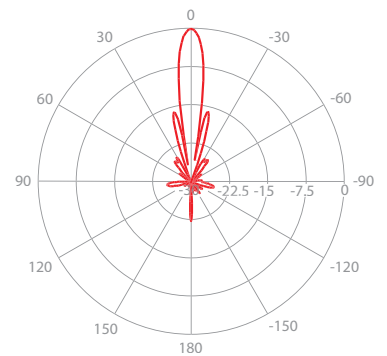
Gain V



Azimuth Pattern V



Elevation Pattern V



**PHYSICAL**

Antenna Connection	TwistPort™ - Quick Locking Waveguide Port
Antenna Type	Parabolic Dish
Environmental	IP65
Pole Mounting Diameter	15-86 mm
Temperature	-40 to +60 °C (-40°F to +140°F)
Wind Survival	160 Km/h
Weight	2.3 Kg / 5 lbs – single unit 2.9 Kg / 6.4 lbs – single unit incl. package
Single Unit	Retail Box: 46.5 x 43 x 12 cm

**PERFORMANCE**

Gain	24 dBi
Azimuth Beam Width -6 dB	H 12° / V 12°
Elevation Beam Width -6 dB	H 12° / V 12°
Azimuth Beam Width -3 dB	H 8° / V 8°
Elevation Beam Width -3 dB	H 8° / V 8°
Front-to-Back Ratio (Min)	24 dB

**COMPATIBLE WIRELESS PLATFORMS**

any TwistPort™ Adaptor with TwistPort™ connector

any SIMPER™ Radio with TwistPort™ connector

**PRODUCT DIMENSIONS**

