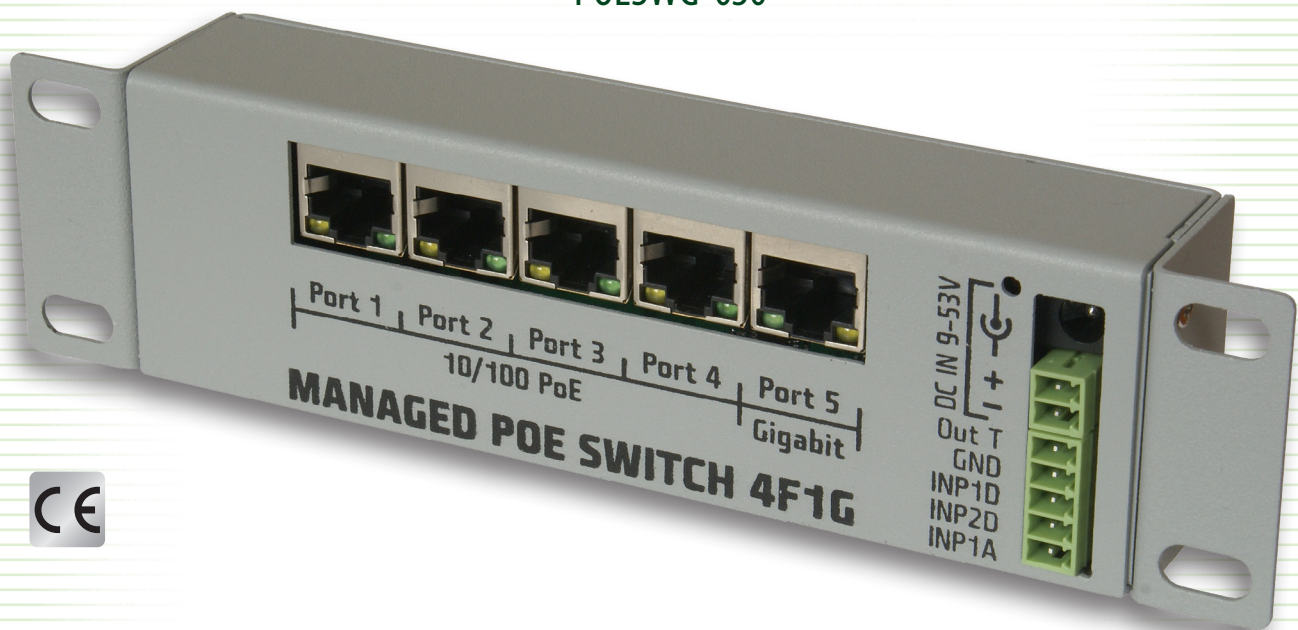


IT'S TIME FOR INTERNET OF THINGS

MANAGED PoE SWITCH 4F1G 9÷53 V

POESWG-030



Managed Switch PoE 4F1G is unique device designed as combination of management switch, PoE injector and in/out controller. In opposite to typical PoE switches this one don't has fixed voltage output. This parameter depend on voltage of connected supply. Thanks it switch is very universal and what is very important power supply uninterruptible is very easy to implementation. Just need to connect buffered uninterruptible power supply with battery (also in offer in our shop).

This solution allow for much higher possible output current, limited to 2A per port. It is important for momentary spikes of current, often occurring during start up. However should be remember that high current can damage RJ45 connectors quick - they are not designed for this applications. All supply parameters can be monitored online, also ICMP packets returns is monitored by watchdog, if ping don't reply, output can be reseted. Switch characterised by unique design - it is only 31mm deep and 1U high. So could be installed in typical 10" rack cabinets as well as in very flat, small cabinets for example on corridors. Other useful feature are 2 logical inputs for monitoring switch surrounds (for ex cabinet doors) and one voltage output (up to 1A) to remote power different devices.

Technical data:

product code / name	POESWG-030 / Managed PoE Switch 4F1G 9÷53 V
built-in ports	4 ports 100/10Mbit, 1 port 1Gbit
power supply voltage	9 ÷ 53V DC
current consumption at one POE port	max 2A (recommended for ling life 1A)
total power on all ports	≤ 6A
power consumption of the switch	one active link < 1W
reverse polarity protection	YES
maximal current from transistor output	1A
work temperature	-20 do +85 °C
dimensions (height x width x length)	45 x 31 x 146mm (173mm with holders)
high	1U
weight	350g

tinycontrol.eu <...> **microprocessors projects**

Konsorcjum ATS Sp.j. 26-600 Radom, ul. Żeromskiego 75, POLAND
tel./fax +48 48 366 00 30, e-mail: sklep@wirelesslan.pl, info@ats.pl, www.tinycontrol.eu, www.wirelesslan.eu

IT'S TIME FOR INTERNET OF THINGS

MANAGED PoE SWITCH 4F1G 9÷53 V

POESWG-030

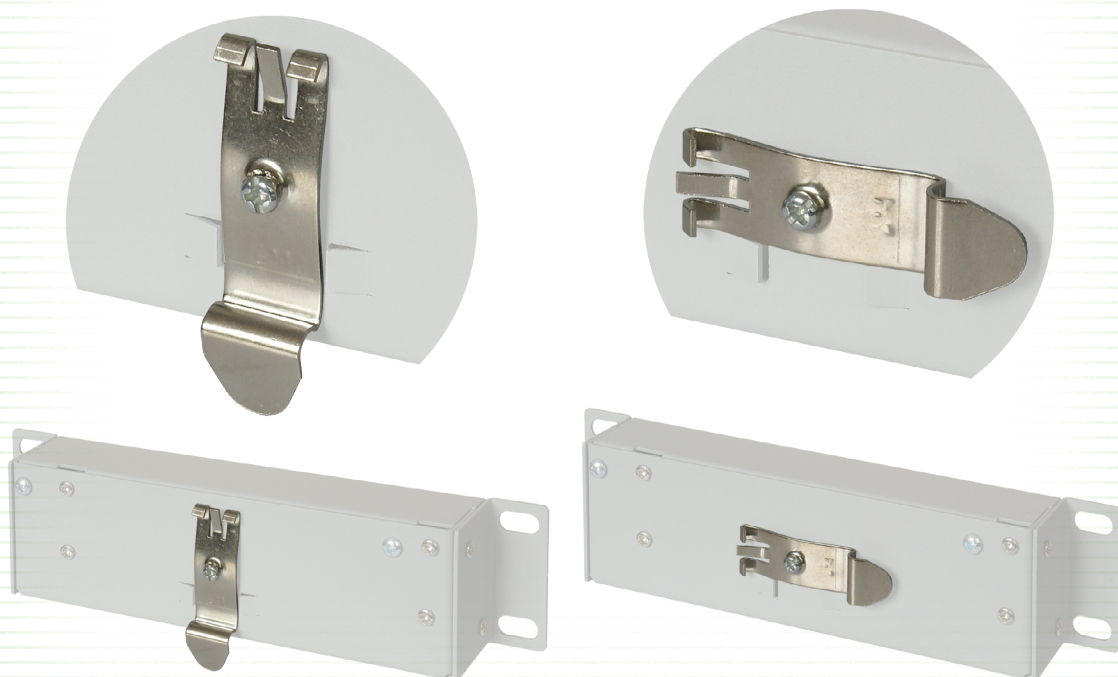
Main features:

- management by WWW or SNMP v2. (all SNMP features available after upgrade)
- firmware upgrade remotely by TFTP
- read data in real time without refresh the page
- ON/OFF power to four passive PoE ports directly from a web page or SNMP
- Watchdog IP on all ports (email notification, trap, reset of power on PoE)
- 1 analog measure input
- 2 logical inputs
- environment temperature measurement
- voltage measurement: resolution, accuracy $\pm 0.1V$
- current measurement on each port and consumed by all
- date and time from NTP or manual
- email alert when Watchdog activation
- automatic sending of SNMP TRAP (VCC, temperature, INPD, INPA)
- supported protocols: HTTP, SNMP, SMTP, NTP, ICMP, DNS, DHCP.
- 4 ports 100/10Mbit
- 1 port 1Gbit
- limit power on the PoE port when 2A current is exceeded.
- VLAN support
- optional mounting on DIN rail.

Typical applications:

- power and switch WLAN radios
- power ad switch IP cameras
- in electric housings with DIN rails for power and switch controlling devices
- in industrial networks
- for different smart home applications

Switch PoE 4F1G with an attached handle
on 35mm DIN rail POESWG-028*



*the handle is sold separately as an optional convenience.

tinycontrol.eu <...> **microprocessors projects**

Konsorcjum ATS Sp.j. 26-600 Radom, ul. Żeromskiego 75, POLAND
tel./fax +48 48 366 00 30, e-mail: sklep@wirelesslan.pl, info@ats.pl, www.tinycontrol.eu, www.wirelesslan.eu